

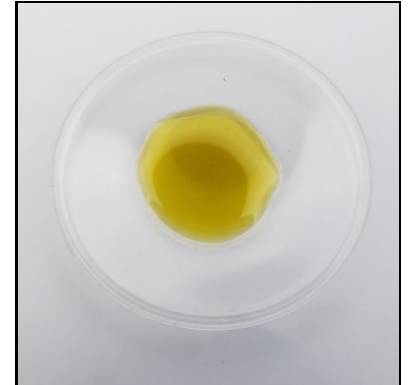
Certificate of Analysis

Client Name: Red Clover Herbal Apothecary Farm	Matrix: Solid
Client Address: 1237 35th Ave, Amery, WI 54001	Date Received: 2/8/2024 10:38:00AM
Sample ID: CBD T-2, Red Clover Herbal CBD Oil, #2428	Lab Sample ID: 2400595-01
Lot/Batch #:	Date of Report: 2/20/2024 5:27:12PM

Analysis	Requested (Yes/No)
Cannabinoid Profile	Yes
Terpene Profile	No
Aflatoxins	No
Heavy Metals	No
Residual Solvents	No
Microbial Testing	No
Pesticides	No



Sample, packaged



Sample, actual

Cannabinoid Profile 2400595-01

CBD T-2, Red Clover Herbal CBD Oil, #2428

Analyte	Result	RL	Units	Analysis Method	Date Analyzed	Notes
Cannabichromene (CBC)	0.149	0.0197	% by Weight w	HPLC	2/14/24 6:42 pm	
Cannabidiol (CBD)	3.70	0.197	% by Weight w	HPLC	2/14/24 6:49 pm	
Cannabidiolic Acid (CBDA)	<0.0197	0.0197	% by Weight w	HPLC	2/14/24 6:42 pm	
Cannabigerol (CBG)	0.0526	0.0197	% by Weight w	HPLC	2/14/24 6:42 pm	
Cannabigerolic Acid (CBGA)	<0.0197	0.0197	% by Weight w	HPLC	2/14/24 6:42 pm	
Cannabinol (CBN)	<0.0197	0.0197	% by Weight w	HPLC	2/14/24 6:42 pm	
Delta-8-Tetrahydrocannabinol (d8-THC)	<0.0983	0.0983	% by Weight w	HPLC	2/14/24 6:42 pm	
Delta-9-Tetrahydrocannabinol (d9-THC)	0.150	0.0197	% by Weight w	HPLC	2/14/24 6:42 pm	
THCA-A	<0.0197	0.0197	% by Weight w	HPLC	2/14/24 6:42 pm	
Total CBG	0.0526	0.0369	% by Weight w	HPLC	2/14/24 6:42 pm	
Total CBD	3.70	0.214	% by Weight w	HPLC	2/14/24 6:49 pm	
Total THC	0.150	0.0369	% by Weight w	HPLC	2/14/24 6:42 pm	

Sample Narrative: 2400595-01

CBD T-2, Red Clover Herbal CBD Oil, #2428

2400595-01, 'CBD T-2 Red Clover Herbal CBD Oil #2428'. 1,028mg of CBD per fluid ounce.



Taylor Schertler For Sarah Smestad - Chemist II/Client Manager

Certificate of Analysis

Notes and Definitions

CFU/g	Colony Forming Units per Gram
HPLC	High-Performance Liquid Chromatography
MS	Mass Spectrometry
<	Less than value listed
RL	Reporting Limit
NA	Not Applicable